

# Fawkes - Duncannon

Transmission line project



**EAST KENTUCKY  
POWER COOPERATIVE**

A Touchstone Energy Cooperative 



## About Our Open House

Local property owners are encouraged to attend our Open House to help us gather information.

The Open House is a key way we keep property owners involved and informed every step of the way when building a transmission line.

Thank you for your cooperation as we work together.

## About This Project

### **About the Fawkes – Duncannon transmission line rebuild project.**

This is a project to rebuild approximately 7 miles of an existing 69-kilovolt (kV) electrical transmission line. The existing 69-kV line will be rebuilt as a 138-kilovolt and 69-kilovolt double-circuit electric transmission line. East Kentucky Power Cooperative (EKPC) plans to utilize the existing 100 feet of right-of-way for the transmission line.

### **Why does EKPC need to build this particular line?**

This project will help to maintain reliable electric service for Blue Grass Energy members and provide voltage support for growing commercial and industrial electric load in the area.

### **What approvals must be secured for this project?**

The Kentucky Public Service Commission (PSC) must grant a certificate of public convenience and necessity for a portion of this project. EKPC will provide notice to the directly impacted property owners regarding the PSC docket number and contact information.

The Rural Utilities Service, an agency that administers the U.S. Department of Agriculture's Rural Development Programs (USDA Rural Development), must ensure that EKPC meets appropriate environmental obligations including compliance with the National Environmental Policy Act, the National Historic Preservation Act and the Endangered Species Act.

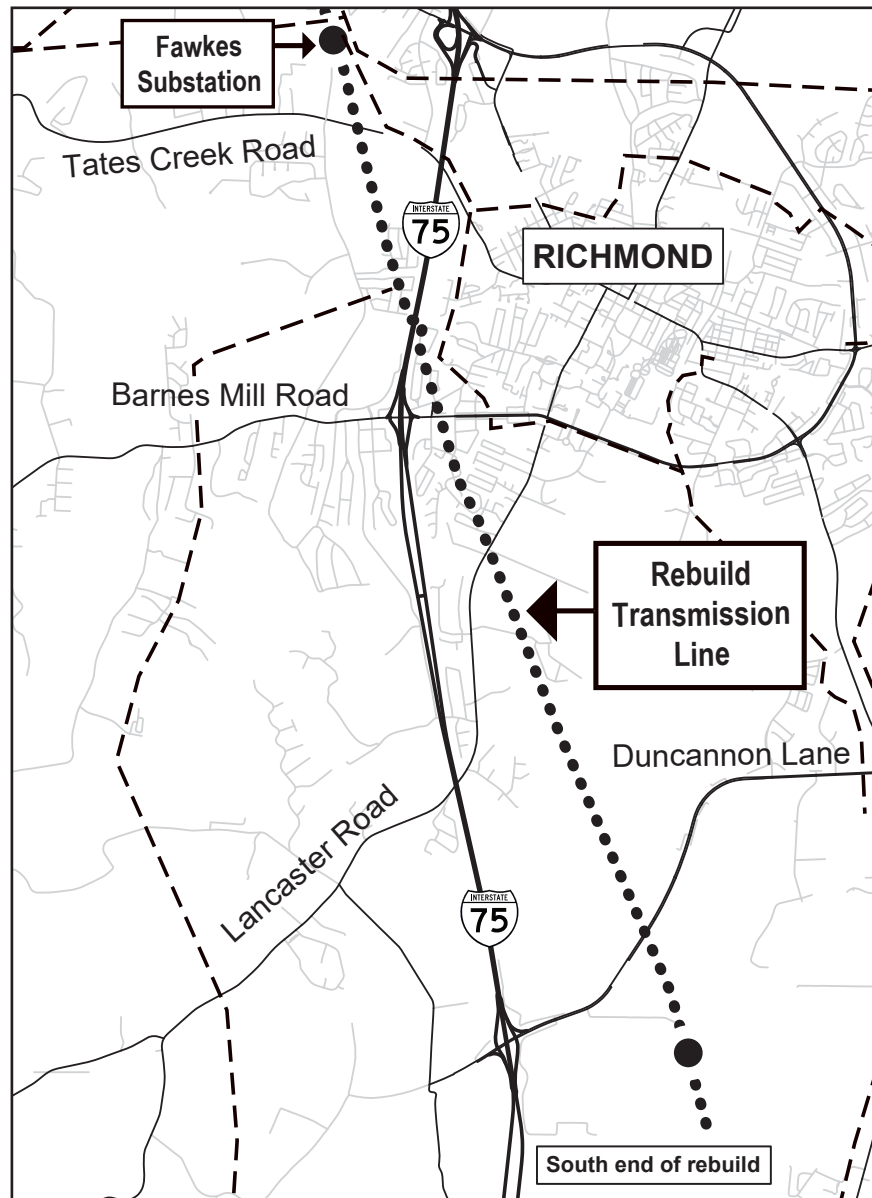




## Line Location

### Where will the line be located?

EKPC plans to rebuild an existing 69-kV electric transmission line in Madison County as a 138-kV and 69-kV double-circuit line. The existing line to be rebuilt extends from EKPC's Fawkes Substation, near the intersection of Goggins Lane and Bates Creek Road, southeast to a location near Parrish Road and Duncannon Lane.

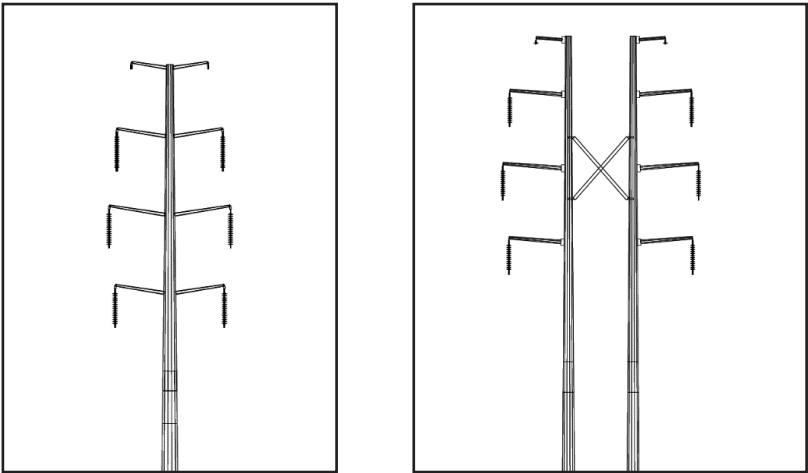




Line Appearance

What will the line look like?

This project will use a mix of single- and double-pole construction. Below are drawings of the typical structures that will be used for the project. EKPC plans to use galvanized steel poles for this project.



Project Schedule

Open House conducted	September 20, 2022
Corridor mapping/surveying	October to December 2022
Right-of-way negotiations	October 2022 to May 2023
Design activity	Through 2022
Structure stakeout	Beginning June 2023
Construction	Fall 2023 to August 2024







## About Us

Winchester-based East Kentucky Power Cooperative is a not-for-profit electric utility that generates and transmits energy to 16 Touchstone Energy Cooperatives across the state. These cooperatives distribute the energy to more than 1.1 million people in Kentucky. Together, we work to improve the quality of life of those we serve



### What a cooperative is

A cooperative is a not-for-profit business that is owned and democratically governed by its members. A co-op exists solely to serve its members.

### What “not-for-profit” means

A not-for-profit cooperative is in business for the public good rather than for the financial benefit of an individual owner or stockholders.

### Why we build power lines

Power lines are built to keep pace with growth in Kentucky. Power lines transport electricity like roads carry traffic. If there is too much traffic on a power line, though, the line overloads and people lose power. We build lines to avoid that problem.

### Why we can't bury lines

While burying lines is more pleasing to the eye and protects them from ice and weather, the cost of burying lines is prohibitive. Line repairs are also extremely difficult and time consuming. It can cost as much as 10 times more to construct underground transmission lines.



**The process we use to build lines**

After the Open House, affected property owners will be notified. If your property is affected, we will seek permission to conduct a survey to confirm the centerline. If EKPC does not already have appropriate property rights, negotiations then begin on a payment to affected landowners for the right to run the line across their land. Our goal is always to minimize costs and the impact upon you and your community.

**About rights of way**

If your property is crossed by this project and EKPC does not already have an appropriate easement, EKPC will seek to purchase an easement that allows the cooperative to locate its poles and wires on your property, and to enter the property as needed for maintenance.

**The property owner will continue to own and use the property**

The easement allows EKPC to clear and control trees and vegetation within the right-of-way, as well as other trees that could interfere with transmission lines, and prevents structures from being constructed in the right-of-way.

**How we work with property owners**

Our professionals will work with you respectfully, and we will work closely with each property owner who is affected by any phase of the construction. It is our goal to make sure that property owners are well-informed about the project and have ample opportunity to discuss it with us.

**What about environmental impacts?**

Our biologists do extensive work prior to project construction in order to assess the environmental impact of a project. The biologists work to ensure EKPC minimizes and avoids impacting endangered plants and animals during line construction.

**How property owners and local communities provide input**

Pursuant to Section 106 of the National Historic Preservation Act of 1966, East Kentucky Power Cooperative, on behalf of USDA Rural Utilities Service, is seeking to identify persons who are interested in participating in the process for evaluating the potential effects of this proposed project on historic properties located in the project area that are listed or eligible for listing in the National Register of Historic Places. If you have a legal or economic relation to properties that will be affected by the proposed project, or if you have a demonstrable interest in the historic built and/or archaeological environment in the project area, you are invited to participate as a consulting party in the Section 106 review process. If you believe you meet these criteria and you wish to participate as a consulting party, please send a letter with your contact information and a statement of your specific interest in the historic properties review process, to Josh Young at [josh.young@ekpc.coop](mailto:josh.young@ekpc.coop) or at East Kentucky Power Cooperative, 4775 Lexington Road, Winchester, KY 40391.





## About Our System

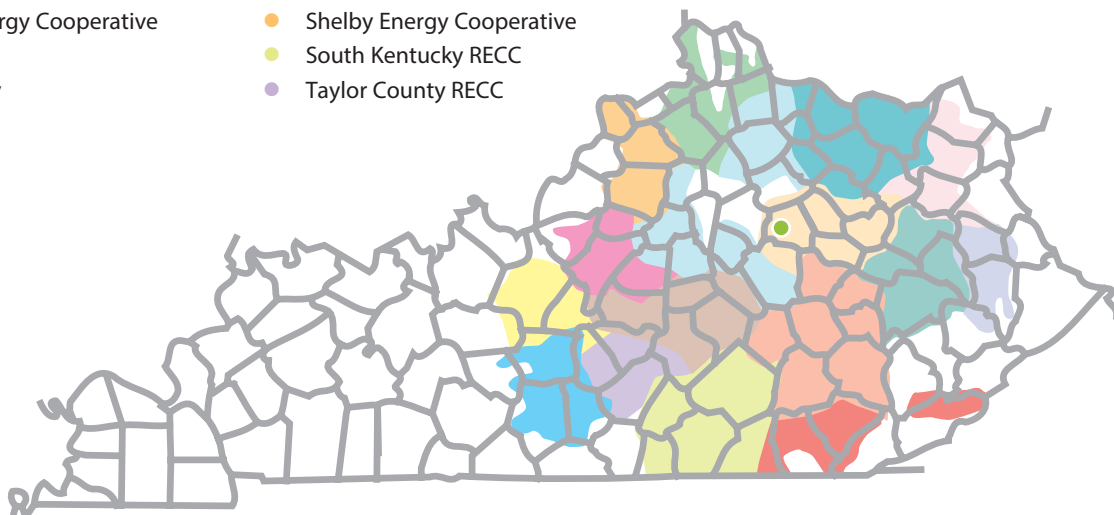
### East Kentucky Power Cooperative Service area

EKPC is a not-for-profit generation and transmission utility with headquarters in Winchester. EKPC generates electric power and transports it to 16 locally-owned cooperatives that distribute it to homes, farms, businesses and industries in 87 Kentucky counties, serving 1.1 million people. Together, EKPC and its owner-member cooperatives are known as Kentucky's Touchstone Energy Cooperatives.

EKPC's 16 owner-member cooperatives include:

- |                                    |                                   |
|------------------------------------|-----------------------------------|
| ● Big Sandy RECC                   | ● Jackson Energy Cooperative      |
| ● Blue Grass Energy Cooperative    | ● Licking Valley RECC             |
| ● Clark Energy Cooperative         | ● Nolin RECC                      |
| ● Cumberland Valley Electric       | ● Owen Electric Cooperative       |
| ● Farmers RECC                     | ● Salt River Electric Cooperative |
| ● Fleming-Mason Energy Cooperative | ● Shelby Energy Cooperative       |
| ● Grayson RECC                     | ● South Kentucky RECC             |
| ● Inter-County Energy              | ● Taylor County RECC              |

● EKPC headquarters





4775 Lexington Road, 40391  
P.O. Box 707,  
Winchester, KY 40392-0707  
Telephone: 859-744-4812  
Fax: 859-744-6008  
[www.ekpc.coop](http://www.ekpc.coop)

