

Floyd-Woodstock

transmission line project



**EAST KENTUCKY
POWER COOPERATIVE**

A Touchstone Energy Cooperative 



About Our Open House

Local property owners are encouraged to attend our Open House to help us gather information.

The Open House is a key way we keep property owners involved and informed every step of the way when building a transmission line.

Thank you for your cooperation as we work together.

About This Project

About the Floyd-Woodstock transmission line project.

This is a project to construct approximately 7 miles of new 69-kilovolt electric transmission line. East Kentucky Power Cooperative (EKPC) plans to purchase 100 feet of right-of-way for the transmission line.

Why does EKPC need to build this particular line?

This project will help to maintain reliable electric service for South Kentucky RECC members and to provide voltage support for growing commercial and industrial load in the area.

What approvals must be secured for this project?

The Rural Utilities Service, an agency that administers the U.S. Department of Agriculture's Rural Development Programs (USDA Rural Development), must ensure that EKPC meets appropriate environmental obligations including compliance with the National Environmental Policy Act, the National Historic Preservation Act and the Endangered Species Act.

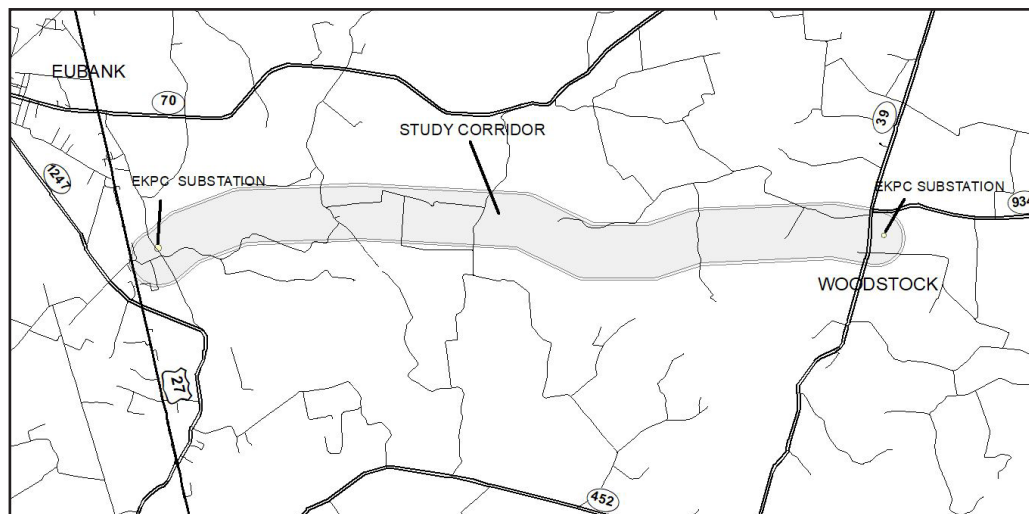




Line Location

Where will the line be located?

East Kentucky Power Cooperative (EKPC) plans to construct a new 69-kV transmission line in Pulaski County. EKPC plans to construct the line within the study corridor displayed in the map below. The transmission line will extend from an existing substation near the intersection of Old Somerset-Stanford Road and Floyd Switch Estesburg Road, east to an existing substation located on Ky. 39 near its intersection with Ky. 934.

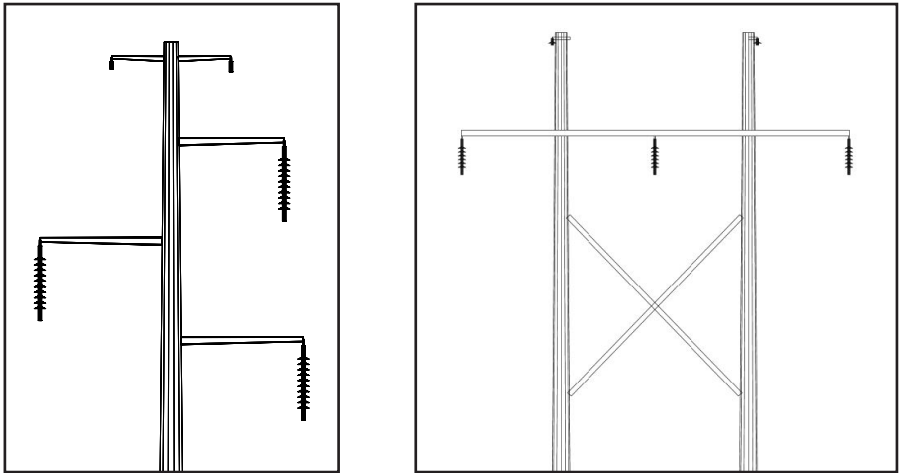




Line Appearance

What will the line look like?

This project will use a mix of single- and double-pole construction. Below are drawings of the typical structures that will be used for the project. EKPC plans to use galvanized steel poles for this project.



Project Schedule

| | |
|----------------------------|--------------------------------|
| Open House conducted | March 3, 2022 |
| Corridor mapping/surveying | March thru April 2022 |
| Centerline established | May 2022 |
| Property owners notified | May 2022 |
| Right-of-way negotiations | May thru October 2022 |
| Design activity | May 2022 |
| Structure stakeout | Beginning November |
| Construction | November 2022 to December 2023 |





About Us

Winchester-based East Kentucky Power Cooperative is a not-for-profit electric utility that generates and transmits energy to 16 Touchstone Energy Cooperatives across the state. These cooperatives distribute the energy to more than 1.1 million people in Kentucky. Together, we work to improve the quality of life of those we serve



What a cooperative is

A cooperative is a not-for-profit business that is owned and democratically governed by its members. A co-op exists solely to serve its members.

What “not-for-profit” means

A not-for-profit cooperative is in business for the public good rather than for the financial benefit of an individual owner or stockholders.

Why we build power lines

Power lines are built to keep pace with growth in Kentucky. Power lines transport electricity like roads carry traffic. If there is too much traffic on a power line, though, the line overloads and people lose power. We build lines to avoid that problem.

Why we can't bury lines

While burying lines is more pleasing to the eye and protects them from ice and weather, the cost of burying lines is prohibitive. Line repairs are also extremely difficult and time consuming. It can cost as much as 10 times more to construct underground transmission lines.



**The process we use to build lines**

Soon, we'll finalize a centerline for the power line. Affected property owners will be notified. If your property is affected, we will seek permission to conduct a survey to confirm the centerline. Negotiations then begin on a payment to affected landowners for the right to run the line across their land. Our goal is always to minimize costs and the impact upon you and your community.

How we choose line routes

We use an objective methodology and computer model developed to strike a balance between a number of factors, including community impacts, geography, environmental impacts and costs. The factors considered in the model were developed with public input and we are able to incorporate public input as we refine the route location.

About rights of way

If your property is crossed by this project, EKPC will seek to purchase an easement that allows the cooperative to locate its poles and wires on your property, and to enter the property as needed for maintenance. The property owner will continue to own and use the property. The easement allows EKPC to clear and control trees within the right-of-way, as well as other trees that could interfere with transmission lines, and prevents structures from being constructed in the right-of-way.

How we value property

We conduct a market analysis of the area based on recent property sales and assess the impact the line would have on any particular property.

How we work with property owners

Our professionals will work with you respectfully, and we will work closely with each property owner who is affected by any phase of the construction. It is our goal to make sure that property owners are well-informed about the project and have ample opportunity to discuss it with us.

What about environmental impacts?

Our biologists do extensive work prior to project construction in order to assess the environmental impact. The biologists work to ensure EKPC minimizes and avoids impacting endangered plants and animals during line construction.

How property owners and local communities provide input

The input of the community and affected property owners is of primary concern. We host open houses to share and gather information, and we strive to keep property owners and others fully informed about construction projects. For this project, EKPC seeks input from affected property owners and concerned citizens during the regulatory process. In accordance with 36 Code of Federal Regulations Part 800 and the National Historic Preservation Act of 1966, as amended, East Kentucky Power Cooperative, on behalf of USDA Rural Development, is soliciting the involvement of those who have a legal or economic relation to properties that will be affected by the proposed line or have a demonstrable interest in the historic built and/or archaeological environment in the project area. To become formally involved in the regulatory process as a consulting party, please send a letter, complete with contact information and statement of interest, to Josh Young at josh.young@ekpc.coop or at East Kentucky Power Cooperative, 4775 Lexington Road, Winchester, KY 40391.





About Our System

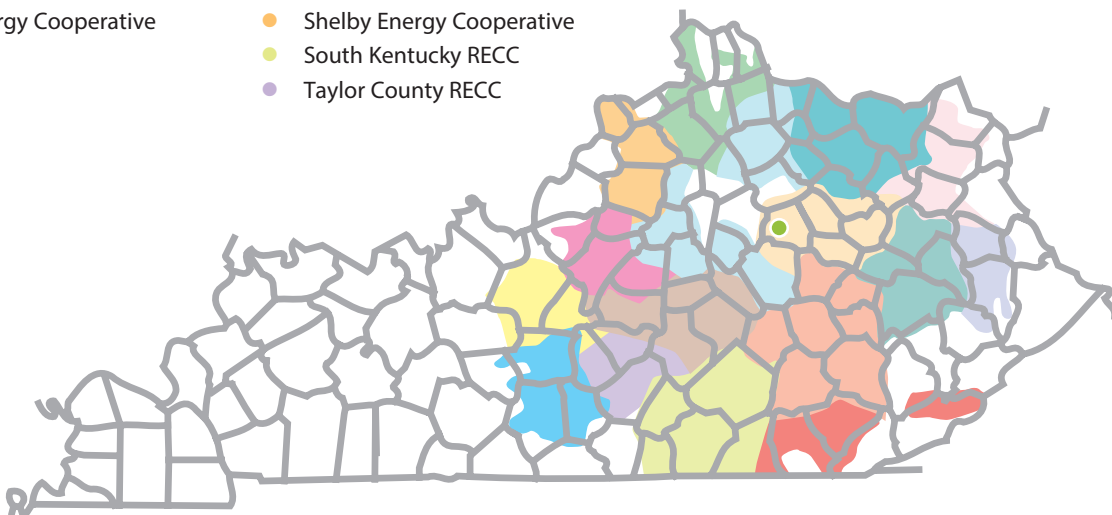
East Kentucky Power Cooperative Service area

EKPC is a not-for-profit generation and transmission utility with headquarters in Winchester. EKPC generates electric power and transports it to 16 locally-owned cooperatives that distribute it to 540,000 homes, farms, businesses and industries in 87 Kentucky counties, serving 1.1 million people. Together, EKPC and its owner-member cooperatives are known as Kentucky's Touchstone Energy Cooperatives.

EKPC's 16 owner-member cooperatives include:

- | | |
|------------------------------------|-----------------------------------|
| ● Big Sandy RECC | ● Jackson Energy Cooperative |
| ● Blue Grass Energy Cooperative | ● Licking Valley RECC |
| ● Clark Energy Cooperative | ● Nolin RECC |
| ● Cumberland Valley Electric | ● Owen Electric Cooperative |
| ● Farmers RECC | ● Salt River Electric Cooperative |
| ● Fleming-Mason Energy Cooperative | ● Shelby Energy Cooperative |
| ● Grayson RECC | ● South Kentucky RECC |
| ● Inter-County Energy | ● Taylor County RECC |

● EKPC headquarters





**EAST KENTUCKY
POWER COOPERATIVE**

A Touchstone Energy Cooperative 

4775 Lexington Road, 40391

P.O. Box 707,

Winchester, KY 40392-0707

Telephone: 859-744-4812

Fax: 859-744-6008

www.ekpc.coop

