

Broughtontown

transmission line project





About Our Open House

Local property owners are encouraged to attend our Open House to help us gather information.

The Open House is a key way we keep property owners involved and informed when building a transmission line.

Thank you for your cooperation as we work together.

About This Project

About the Broughtontown substation and transmission line project.

This is a project to construct a new distribution substation and approximately 7.4 miles of 69-kilovolt transmission line. East Kentucky Power Cooperative (EKPC) plans to purchase 100 feet of right-of-way for the transmission line.

Why does EKPC need to build this particular line?

This project will help to maintain reliability for Inter-County Energy Cooperative members in the vicinity.

What approvals must be secured for this project?

Because EKPC plans to apply for project financing assistance from the U.S. Department of Agriculture, Rural Utilities Service (RUS), the proposed project constitutes a Federal action subject to review in accordance with Rural Development's (RD) Environmental Policy and Procedures for implementing the National Environmental Policy Act (7 CFR Part 1970). Per Section 1970.54 of these regulations, the proposed project meets the criteria for a Categorically Excluded proposal requiring the preparation of a site-specific Environmental Report (ER).

An adequate ER enables RUS to evaluate the environmental effects of a proposed categorically excluded project. It also enables RUS to fulfill its obligations under the National Environmental Policy Act of 1969 (NEPA), as amended, and other environmental mandates (i.e. National Historic Preservation Act, Endangered Species Act, etc.). RUS is solely responsible for determining the adequacy of the proposed project's environmental acceptability. The ER is intended to provide RUS officials with sufficient information to make a decision regarding the significance of the environmental impacts of its actions, based on an understanding of environmental consequences presented in the ER document.

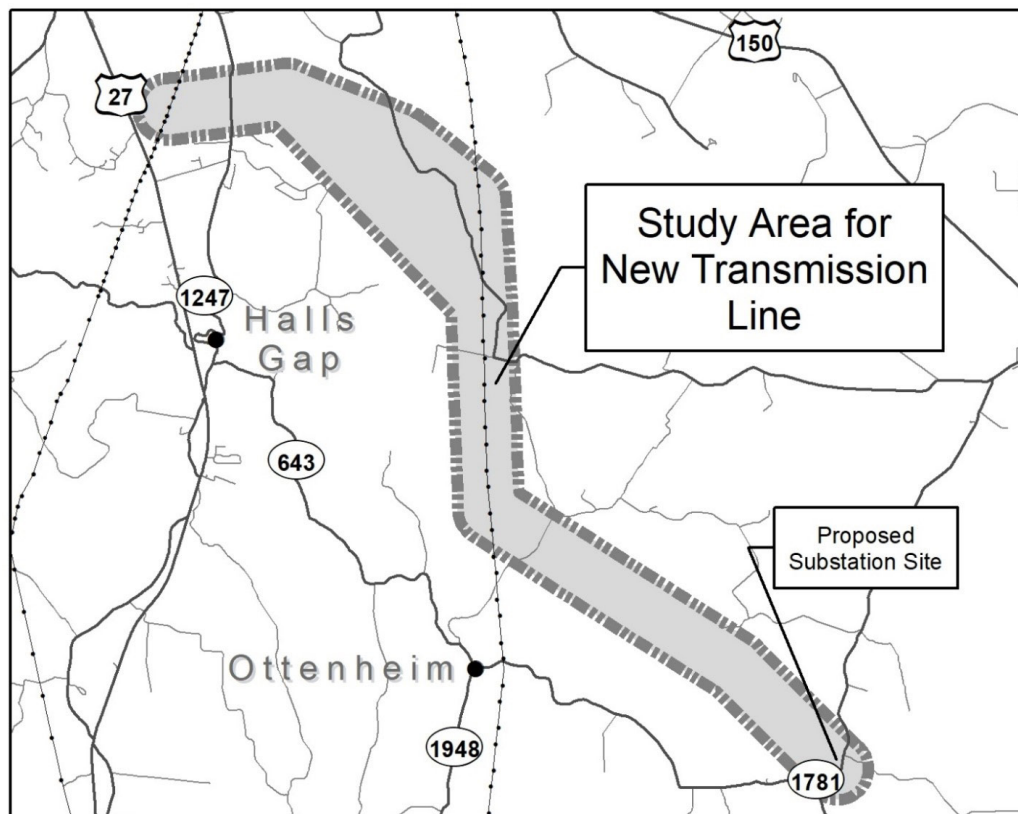




Line Location

Where will the line be located?

East Kentucky Power Cooperative (EKPC) plans to construct a new distribution substation and associated 69-kV transmission line in Lincoln County. EKPC plans to construct the line within the study area displayed in the map below. The transmission line will run from EKPC's existing Tommy Gooch-to-Highland 69-kV transmission line southeast approximately 7.4 miles to a new substation to be constructed near the junction of Kentucky Route 643 and Kentucky Route 1781.

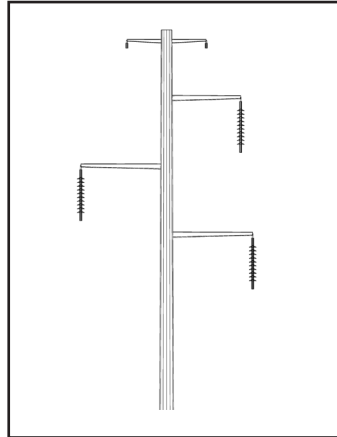
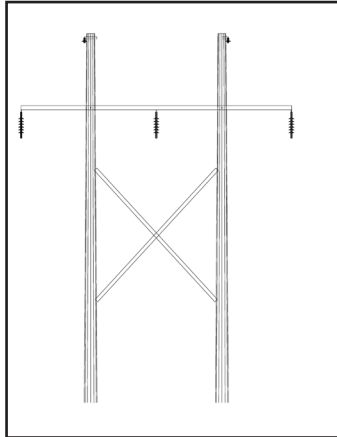




Line Appearance

What will the line look like?

This project will use a mix of single- and double-pole construction. Below are drawings of the typical structures that will be used for the project. EKPC plans to use steel poles for this project.



Project Schedule

Open House conducted	Oct. 10, 2019
Corridor mapping/surveying	Fall 2019
Centerline established	Winter 2019-20
Property owners notified	Winter 2019-20
Right-of-way negotiations	Winter 2019 to Summer 2020
Design activity	Spring 2020
Structure stakeout	Fall 2020
Construction	Winter 2020 to Winter 2021





About Us

Winchester-based East Kentucky Power Cooperative is a not-for-profit electric utility that generates and transmits energy to 16 Touchstone Energy Cooperatives across the state. These cooperatives distribute the energy to more than 1.1 million people in Kentucky. Together, we work to improve the quality of life of those we serve.



What a cooperative is

A cooperative is a not-for-profit business that is owned and democratically governed by its members. A co-op exists solely to serve its members.

What “not-for-profit” means

A not-for-profit cooperative is in business for the public good rather than for the financial benefit of an individual owner or stockholders.

Why we build power lines

Power lines are built to keep pace with the tremendous growth in Kentucky. Power lines transport electricity like roads carry traffic. If there is too much traffic on a power line, though, the line overloads and people lose power. We build lines to avoid that problem.

Why we can't bury lines

While burying lines is more pleasing to the eye and protects them from ice and weather, the cost of burying lines is prohibitive. Line repairs are also extremely difficult and time consuming. It can cost as much as 10 times more to construct underground transmission lines.



**The process we use to build lines**

After the Open House, we'll finalize a centerline for the power line. Affected property owners will be notified. If your property is affected, we will seek permission to conduct a survey to confirm the centerline. Negotiations then begin on a payment to affected landowners for the right to run the line across their land. Our goal is always to minimize costs and the impact upon you and your community.

How we choose line routes

We use an objective methodology and computer model developed to strike a balance between a number of factors, including community impacts, geography, environmental impacts and costs. The factors considered in the model were developed with public input and we are able to incorporate public input as we refine the route location.

About rights of way

If your property is crossed by this project, EKPC will seek to purchase an easement that allows the cooperative to locate its poles and wires on your property, and to enter the property as needed for maintenance. The property owner will continue to own and use the property. The easement allows EKPC to clear and control trees within the right-of-way, as well as other trees that could interfere with transmission lines, and prevents structures from being constructed in the right-of-way.

How we value property

We conduct a market analysis of the area based on recent property sales and assess the impact the line would have on any particular property.

How we work with property owners

Our professionals will work with you respectfully, and we will work closely with each property owner who is affected by any phase of the construction. It is our goal to make sure that property owners are well-informed about the project and have ample opportunity to discuss it with us.

What about environmental impacts?

Our biologists do extensive work prior to project construction in order to assess the environmental impact. The biologists work to ensure EKPC minimizes and avoids impacting endangered plants and animals during line construction.

How property owners and local communities provide input

The input of the community and affected property owners is of primary concern. We host open houses to share and gather information, and we strive to keep property owners and others fully informed about construction projects. For this project, EKPC seeks input from affected property owners and concerned citizens during the regulatory process. Pursuant to Section 106 of the National Historic Preservation Act of 1966, East Kentucky Power Cooperative, on behalf of USDA Rural Utilities Service, is seeking to identify persons who are interested in participating in the process for evaluating the potential effects of this proposed project on historic properties located in the project area that are listed or eligible for listing in the National Register of Historic Places. If you have a legal or economic relation to properties that will be affected by the proposed project, or if you have a demonstrable interest in the historic built and/or archaeological environment in the project area, you are invited to participate as a consulting party in the Section 106 review process. If you believe you meet these criteria and you wish to participate as a consulting party, please send a letter with your contact information and a statement of your specific interest in the historic properties review process, to Josh Young at josh.young@ekpc.coop or at East Kentucky Power Cooperative, 4775 Lexington Road, Winchester, KY 40391.





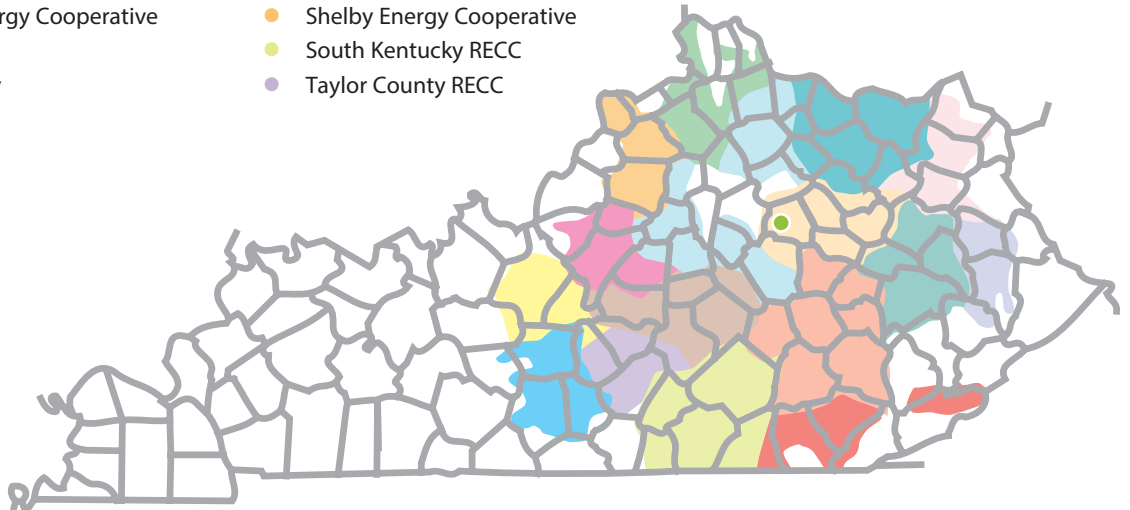
About Our System

East Kentucky Power Cooperative Service area

EKPC is a not-for-profit generation and transmission utility with headquarters in Winchester. EKPC generates electric power and transports it to 16 locally-owned cooperatives that distribute it to 540,000 homes, farms, businesses and industries in 87 Kentucky counties, serving 1.1 million people. Together, EKPC and its owner-member cooperatives are known as Kentucky's Touchstone Energy Cooperatives.

EKPC's 16 owner-member cooperatives include:

- Big Sandy RECC
- Blue Grass Energy Cooperative
- Clark Energy Cooperative
- Cumberland Valley Electric
- Farmers RECC
- Fleming-Mason Energy Cooperative
- Grayson RECC
- Inter-County Energy
- Jackson Energy Cooperative
- Licking Valley RECC
- Nolin RECC
- Owen Electric Cooperative
- Salt River Electric Cooperative
- Shelby Energy Cooperative
- South Kentucky RECC
- Taylor County RECC
- EKPC headquarters





**EAST KENTUCKY
POWER COOPERATIVE**

A Touchstone Energy Cooperative 

4775 Lexington Road, 40391

P.O. Box 707,

Winchester, KY 40392-0707

Telephone: 859-744-4812

Fax: 859-744-6008

www.ekpc.coop

